

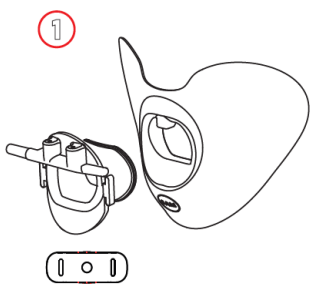


Scott Airway Management is an **Australian** company that identified a **problem** - Protecting our healthcare professionals from patients' aerosolised secretions during Endoscopy, Bronchoscopy and Transoesophageal Echo (TOE) procedures.

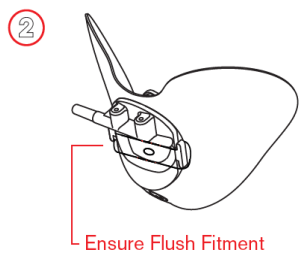
The **solution** is the SAM SAFETY SEAL BITE BLOCK VALVE.

SAM SAFETY SEAL SINGLE USE ONLY
BITE BLOCK WITH VALVE

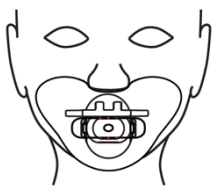
Patients must meet these criteria -
• Adult • Sedated • Endoscopy/Bronchoscopy /TOE procedure



The SAM Safety Seal comes fully assembled with the SAM Bite Block and Valve.



The bite block fits flush with the SAM Safety Seal and the valve is held insitu via the side lugs and valve plug design.



The SAM Safety Seal is ready to use. Use lubricant to aid insertion through the valve if required. After procedure completion, please discard the device and complete an evaluation form.

